

The upper hand

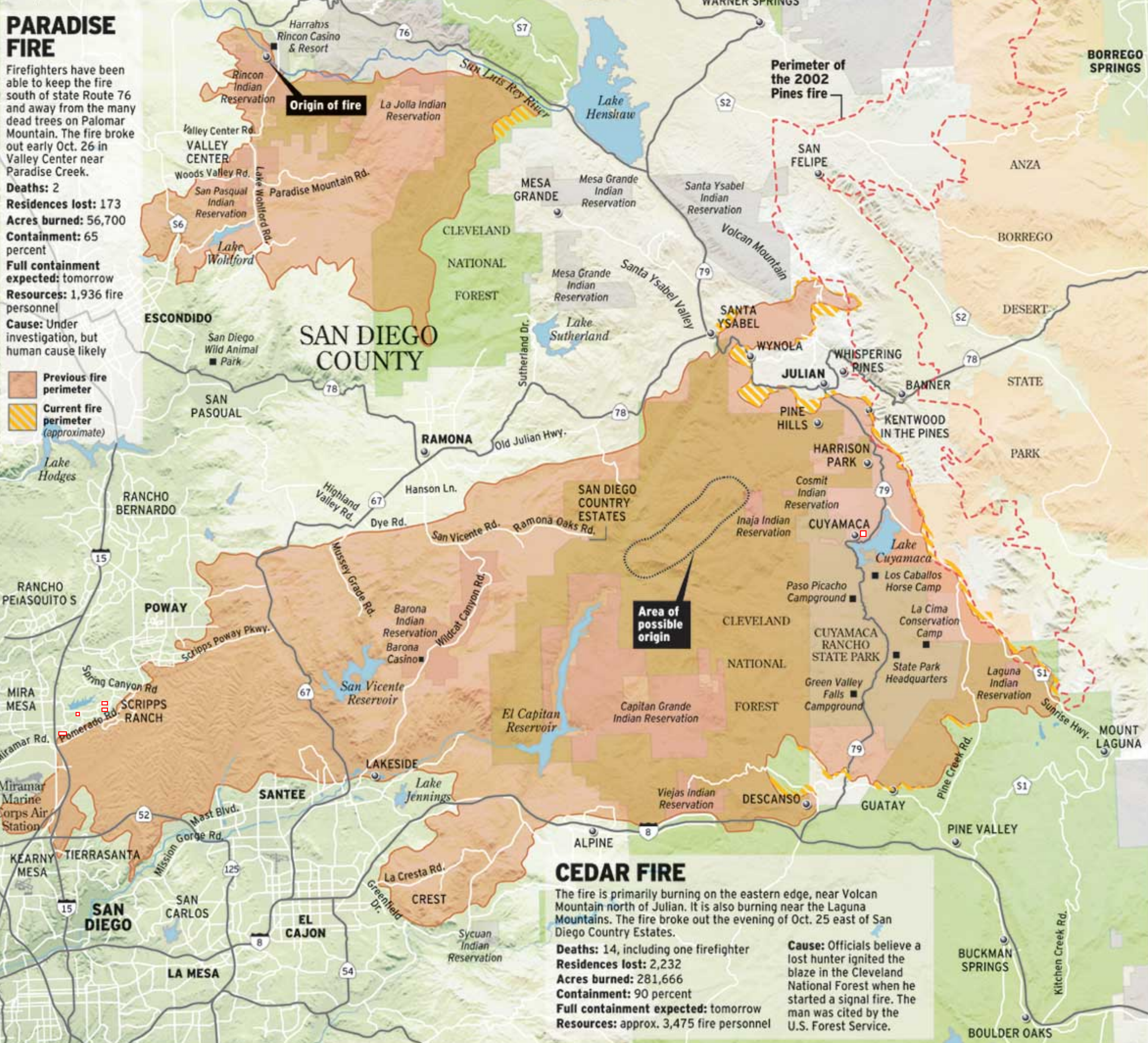
Firefighters had been concerned that Santa Ana winds would return early this week and stymie containment of the Paradise and Cedar fires, but the latest forecasts said that is unlikely. As rain fell on the county yesterday, fire crews continued to build fire lines and look for hot spots.

PARADISE FIRE

Firefighters have been able to keep the fire south of state Route 76 and away from the many dead trees on Palomar Mountain. The fire broke out early Oct. 26 in Valley Center near Paradise Creek.

Deaths: 2
Residences lost: 173
Acres burned: 56,700
Containment: 65 percent
Full containment expected: tomorrow
Resources: 1,936 fire personnel
Cause: Under investigation, but human cause likely

 Previous fire perimeter
 Current fire perimeter (approximate)



Origin of fire

Area of possible origin

Perimeter of the 2002 Pines fire

CEDAR FIRE

The fire is primarily burning on the eastern edge, near Volcan Mountain north of Julian. It is also burning near the Laguna Mountains. The fire broke out the evening of Oct. 25 east of San Diego Country Estates.

Deaths: 14, including one firefighter
Residences lost: 2,232
Acres burned: 281,666
Containment: 90 percent
Full containment expected: tomorrow
Resources: approx. 3,475 fire personnel

Cause: Officials believe a lost hunter ignited the blaze in the Cleveland National Forest when he started a signal fire. The man was cited by the U.S. Forest Service.